



PRODUCT DATA SHEET

CHO host cell protein ELISA kit

ENZ-KIT128

Sensitive (10 ng/ml) ELISA for the quantitative determination of host cell protein contamination in bulk products expressed in Chinese Hamster Ovary (CHO) expression systems.

Product Number/Sizes

ENZ-KIT128-0001 96 wells

- Sensitive measurement of CHO host cell protein, detecting as little as 10 ng/ml
- Low intra-assay variability allows for streamlined testing
- High throughput format with results in 3 hours
- Fully quantitative results that surpass semi-quantitative Western blot analysis

The CHO host cell protein ELISA kit is a complete, colorimetric, immunometric immunoassay kit for the quantitative determination of Chinese Hamster Ovary (CHO) host cell protein contamination with results in 3 hours

Product Details

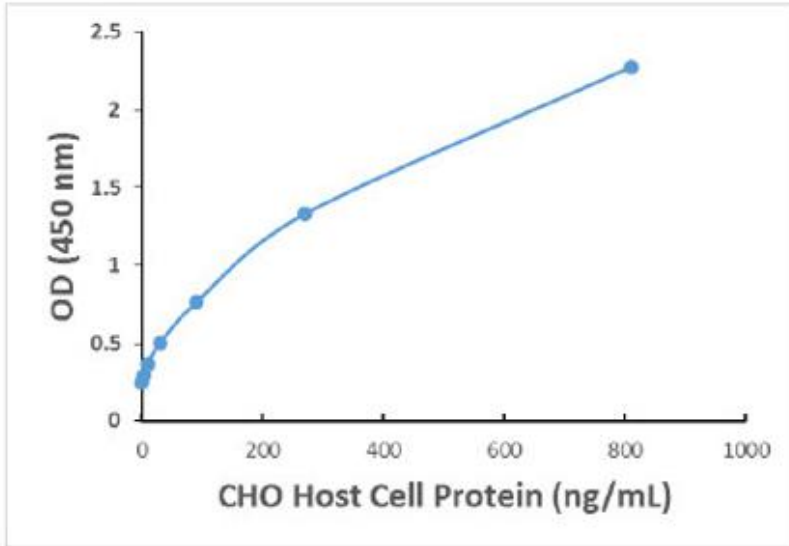
SENSITIVITY:	10 ng/ml (range 3-810 ng/ml)
ASSAY TIME:	3 hours
APPLICATIONS:	ELISA, Colorimetric detection
APPLICATION NOTES:	For the quantitative determination of contamination with CHO host cell protein.
SHIPPING:	Blue Ice Not Frozen
LONG TERM STORAGE:	+4°C
CONTENTS:	1 x 96 well plate, protein standards, 5x dilution buffer, 10x PBS-T, reporting antibody, streptavidin-HRP conjugate, TMB substrate, stop solution, plate sealer
REGULATORY STATUS:	RUO - Research Use Only

GLOBAL HEADQUARTERS

Enzo Life Sciences, Inc.
10 Executive Blvd
Farmingdale, NY 11735
USA
T 1-800-942-0430
T 1-631-694-7070
F 1-610-941-9252
E info-usa@enzolifesciences.com
www.enzolifesciences.com

EUROPE/ASIA

Enzo Life Sciences (ELS) AG
Industriestrasse 17, Postfach
CH-4415 Lausen
Switzerland
T +41/061 926 89 89
F +41/061 926 89 79
E info-ch@enzolifesciences.com
www.enzolifesciences.com



Standard curve of CHO host cell protein ELISA kit

Revised 31-Jan-23

GLOBAL HEADQUARTERS

Enzo Life Sciences, Inc.
10 Executive Blvd
Farmingdale, NY 11735
USA
T 1-800-942-0430
T 1-631-694-7070
F 1-610-941-9252
E info-usa@enzolifesciences.com
www.enzolifesciences.com

EUROPE/ASIA

Enzo Life Sciences (ELS) AG
Industriestrasse 17, Postfach
CH-4415 Lausen
Switzerland
T +41/061 926 89 89
F +41/061 926 89 79
E info-ch@enzolifesciences.com
www.enzolifesciences.com